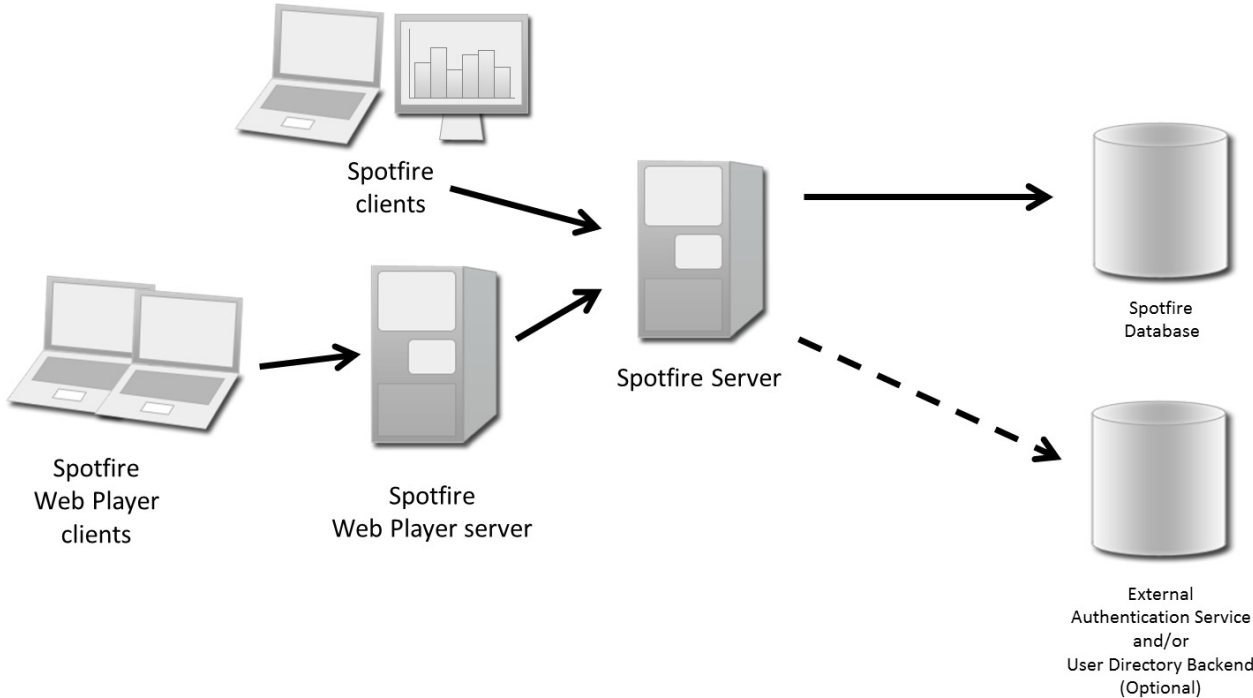


# TIBCO Spotfire® 3.3

## Environment Overview



# Overview of the TIBCO Spotfire Environment

---

## TIBCO Spotfire Server

**TIBCO Spotfire Server** acts as the hub of the Spotfire system. It handles user logins, configuration (users, groups, licenses, preferences) and connects users to **external data sources**. It stores all this information in the **TIBCO Spotfire Database**.

Users can be authenticated and authorized either internally, with user and group data stored in the **TIBCO Spotfire Database**, or through an external service. The following types of authentication and User Directory (authorization) are supported:

**Authentication:**

*Password based:* LDAP Directory, Windows NT Domain, Spotfire Database, Custom JAAS Module

*Single sign-on:* Kerberos, X.509 Client Certificate, NTLM v1, NTLM v2

**User Directory (authorization):**

LDAP Directory, Windows NT Domain, Spotfire Database

## TIBCO Spotfire Professional and TIBCO Spotfire Enterprise Player

**TIBCO Spotfire Professional** is the main user application in the Spotfire environment. This application is used to create analyses and publish them to Spotfire Enterprise Player and Web Player.

**TIBCO Spotfire Enterprise Player** is a simplified version of TIBCO Spotfire Professional used to view analyses created in TIBCO Spotfire Professional.

Both clients log into the **TIBCO Spotfire Server** to download software packages, retrieve data from external data sources, and to save and load analyses from the library, located in the **TIBCO Spotfire Database**. They are installed using the same installer.

## TIBCO Spotfire Web Player

**TIBCO Spotfire Web Player** is a web client used to view analyses created in **TIBCO Spotfire Professional** and stored in the library.

## TIBCO Spotfire Database

The **TIBCO Spotfire Database** is where the TIBCO Spotfire system stores data such as analyses, user and group data, preferences, licenses, and connection information to external data sources. All communication with the TIBCO Spotfire Database is performed through the TIBCO Spotfire Server.

## Multiple Servers

To improve performance, multiple **TIBCO Spotfire Servers** can be clustered, using a load balancer for the clients to communicate with. This load balancer must support *session affinity*. An example of how to set up such a load balancer using Apache is available in the **TIBCO Spotfire Server – Installation and Configuration Manual**.

The **TIBCO Spotfire Web Player** server can also be clustered to improve performance. This should be done using Microsoft Network Load Balancing Services. How to set this up is described in the **TIBCO Spotfire Web Player – Installation and Configuration Manual**.

---

# Installing the TIBCO Spotfire System

---

## Preparing the Spotfire Database

You must have a database engine installed before you begin. Use the scripts distributed with the **TIBCO Spotfire Server** to create the necessary database tables and logins on the database server.

For details, refer to the **TIBCO Spotfire Server 3.3 – Installation and Configuration Manual**.

## Installing TIBCO Spotfire Server

### Software Installation

Install the software package appropriate for your hardware and operating system.

### Configuration

Launch the **TIBCO Spotfire Configuration Console** to configure the system.

For details, refer to the **TIBCO Spotfire Server 3.3 – Installation and Configuration Manual**.

## Installing TIBCO Spotfire Professional and Enterprise Player

Assign a Spotfire Administrator using **TIBCO Spotfire Configuration Console**.

Launch the **TIBCO Spotfire Administration Console** to deploy software packages from the **TIBCO Spotfire** installation package.

Install **TIBCO Spotfire** on a computer. Launch it, log in, and go to the **TIBCO Spotfire Administration Manager** to set up licenses.

Install **TIBCO Spotfire** on all end user computers.

For details, refer to the **TIBCO Spotfire 3.3 – Deployment and Administration Manual**.

## Installing TIBCO Spotfire Web Player

Make sure you have Internet Information Services and its needed add-ons installed.

Install the **TIBCO Spotfire Web Player** software package.

If necessary, configure Internet Information Services authentication for use with the Spotfire system.

For details, refer to the **TIBCO Spotfire Web Player 3.3 – Installation and Configuration Manual**.

---

# Online Resources and Contact Information

---

## Online Documentation

Spotfire Technology Network (STN), <http://spotfire.tibco.com/stn/> has a number of articles regarding advanced configuration and usage of the Spotfire system.

## System Requirements

Please visit <http://spotfire.tibco.com/support/> for complete system requirements.

## Download

**Products:** <http://download.tibco.com> **Patches:** <http://support.spotfire.com/patches.asp>

## Contacting Support

**Web:** <http://spotfire.tibco.com/support/>

**Email:** [support@tibco.com](mailto:support@tibco.com)

**Phone:** *North and South America:* +1.650.846.5595 or +1.877.958.4226 (1.877 95 TIBCO). *EMEA (Europe, Middle East, Africa):* +44 (0) 870.909.3898

## Important Information

---

SOME TIBCO SOFTWARE EMBEDS OR BUNDLES OTHER TIBCO SOFTWARE. USE OF SUCH EMBEDDED OR BUNDLED TIBCO SOFTWARE IS SOLELY TO ENABLE THE FUNCTIONALITY (OR PROVIDE LIMITED ADD-ON FUNCTIONALITY) OF THE LICENSED TIBCO SOFTWARE. THE EMBEDDED OR BUNDLED SOFTWARE IS NOT LICENSED TO BE USED OR ACCESSED BY ANY OTHER TIBCO SOFTWARE OR FOR ANY OTHER PURPOSE.

USE OF TIBCO SOFTWARE AND THIS DOCUMENT IS SUBJECT TO THE TERMS AND CONDITIONS OF A LICENSE AGREEMENT FOUND IN EITHER A SEPARATELY EXECUTED SOFTWARE LICENSE AGREEMENT, OR, IF THERE IS NO SUCH SEPARATE AGREEMENT, THE CLICKWRAP END USER LICENSE AGREEMENT WHICH IS DISPLAYED DURING DOWNLOAD OR INSTALLATION OF THE SOFTWARE (AND WHICH IS DUPLICATED IN LICENSE\_TIBCOSPOTFIRE.PDF) OR IF THERE IS NO SUCH SOFTWARE LICENSE AGREEMENT OR CLICKWRAP END USER LICENSE AGREEMENT, THE LICENSE(S) LOCATED IN THE "LICENSE" FILE(S) OF THE SOFTWARE. USE OF THIS DOCUMENT IS SUBJECT TO THOSE TERMS AND CONDITIONS, AND YOUR USE HEREOF SHALL CONSTITUTE ACCEPTANCE OF AND AN AGREEMENT TO BE BOUND BY THE SAME.

This document contains confidential information that is subject to U.S. and international copyright laws and treaties. No part of this document may be reproduced in any form without the written authorization of TIBCO Software Inc.

TIBCO and Spotfire are either registered trademarks or trademarks of TIBCO Software Inc. and/or subsidiaries of TIBCO Software Inc. in the United States and/or other countries. All other product and company names and marks mentioned in this document are the property of their respective owners and are mentioned for identification purposes only. This software may be available on multiple operating systems. However, not all operating system platforms for a specific software version are released at the same time. Please see the readme.txt file for the availability of this software version on a specific operating system platform.

THIS DOCUMENT IS PROVIDED "AS IS" WITHOUT WARRANTY OF ANY KIND, EITHER EXPRESS OR IMPLIED, INCLUDING, BUT NOT LIMITED TO, THE IMPLIED WARRANTIES OF MERCHANTABILITY, FITNESS FOR A PARTICULAR PURPOSE, OR NON-INFRINGEMENT. THIS DOCUMENT COULD INCLUDE TECHNICAL INACCURACIES OR TYPOGRAPHICAL ERRORS. CHANGES ARE PERIODICALLY ADDED TO THE INFORMATION HEREIN; THESE CHANGES WILL BE INCORPORATED IN NEW EDITIONS OF THIS DOCUMENT. TIBCO SOFTWARE INC. MAY MAKE IMPROVEMENTS AND/OR CHANGES IN THE PRODUCT(S) AND/OR THE PROGRAM(S) DESCRIBED IN THIS DOCUMENT AT ANY TIME.

Copyright © 1996 - 2011 TIBCO Software Inc. ALL RIGHTS RESERVED.

THE CONTENTS OF THIS DOCUMENT MAY BE MODIFIED AND/OR QUALIFIED, DIRECTLY OR INDIRECTLY, BY OTHER DOCUMENTATION WHICH ACCOMPANIES THIS SOFTWARE, INCLUDING BUT NOT LIMITED TO ANY RELEASE NOTES AND "READ ME" FILES.

TIBCO Spotfire is covered by U.S. Patent No. 6,014,661 and U.S. Patent No. 7, 216,116.

Other patent(s) pending.

TIBCO Software Inc. Confidential Information

---